

# pathways

Winter | December-February | 2020-2021

**YOU'RE  
ESSENTIAL  
TO US**

Our Community  
& COVID-19  
**Page 4**

Surveying Our Evolving  
Community Needs  
**Page 6**

Get Cozy with Books  
**Page 12**

Celebrating Black  
Voices  
**Page 19**



**TINLEY PARK**  
public library

# WHAT'S INSIDE

**3**

Get Your Card Today



**4**

Our Community  
& COVID-19



**6**

Surveying Our  
Evolving Community  
Needs

**10**

Free Online  
Resources



**12**

Get Cozy with Books

**14**

Virtual Events  
How to Attend

**16**

Virtual Events  
Children

**17**

Virtual Events  
Children & Teens

**18**

Virtual Events  
Adults



**19**

Celebrating Black  
Voices

**20**

Watch on YouTube

**22**

Virtual Discussions

## Website

[tplibrary.org](http://tplibrary.org)

## Contact

708.532.0160

[tplibrary@tplibrary.org](mailto:tplibrary@tplibrary.org)



## Modified Hours

mon-fri • 10 am–8 pm

sat • 10 am–4 pm

sun • 1–4 pm

## Ask a Librarian

Live chat available at

**tplibrary.org** during our  
modified hours.

# GET YOUR CARD TODAY



**10 million items** you can check out through our shared catalog—including 170,000+ at your library



**1 million** eBooks, audiobooks, and more through the Hoopla, Libby/OverDrive apps



**Thousands** of films—including educational content for kids—through Kanopy



**50+** online resources—Ancestry, Consumer Reports, and Lynda—to help you with research and life skills



**One** library card that never expires unless you move away

## Who can get a library card?

- Anyone who lives in incorporated Tinley Park or Orland Hills
- Anyone who owns or leases taxable residential or business property in incorporated Tinley Park or Orland Hills
- Individuals who live in unincorporated Tinley Park may apply for a non-resident fee card.

## How to get your library card

When the library is open, stop by the Checkout Desk with your Illinois drivers license or state ID with your current address. If the address is not current, please provide a current utility bill addressed to the applicant. A parent's or legal guardian's signature is required on the application and library card of anyone under the age of 18.

For a complete list of acceptable forms of identification and proof of residency, as well as information on how to use your library card, visit [tplibrary.org/library-card](https://tplibrary.org/library-card) or call 708.532.0160, x3.

## Digital-Only Cards

Residents of incorporated Tinley Park and Orland Hills can always sign up for a digital-only card at [tplibrary.org/library-card](https://tplibrary.org/library-card). Digital-only cards provide access to our online resources, eBooks, audiobooks, and streaming media.



*Love it! Thanks for keeping everyone safe and trying new virtual things!*

—PATRON K. V. S.



*I just want to say THANKS! Thanks for providing reading materials via curbside pickup. It truly makes me happy to read!*

—PATRON J. S. T.



*The curbside has been awesome and so appreciated!*

—PATRON M. S.



.....  
**THANK YOU FOR  
YOUR SUPPORT.**



*Thank you Tinley library. You did a great job with reopening again for us.*

—PATRON K. M.



*Thank you TPPL! I just picked up my materials at curbside pick up. Awesome service and I thank the staff for their service during this pandemic.*

—PATRON C. M. G.

# OUR COMMUNITY & COVID-19

**A**long with the changing seasons, the library is undergoing some changes as well. Nine months into the pandemic, we are all still dealing with the effects of COVID-19 and have not yet been able to bring the library back to full service. Rest assured, we are following guidelines from local and state authorities to keep you and your families as safe as we possibly can while offering as many services as we can. As always, you can find our latest COVID-19 updates, our Phased Reopening Plan, and our currently available services at [tplibrary.me/covid](https://tplibrary.me/covid).

**At the time of this writing, we are in Phase 4 of our Phased Reopening Plan. Should circumstances require us to move back into Phase 3 and close our doors again, you will still be able to:**

- Schedule curbside pickup of your holds.
  - If you cannot use curbside pickup due to health concerns, please contact us and ask about homebound delivery.
- Return books through our outdoor book drops.
- Attend virtual events.
- Pick up a Browsing Bundle (3-5 handpicked books and movies).

- Drop off your old VHS, reel-to-reel film, vinyl records, and cassette tapes to have them digitized.
- Use Libby/OverDrive, Hoopla, and Kanopy to find eBooks, audiobooks, and movies.
- Sign up for a library card online.

Recently, we've worked hard to bring some joy to our neighbors by decorating our boardwalk and grounds to highlight the beauty of fall. We intend to decorate the boardwalk and grounds for the winter season as well, so that you can experience some cheer at a safe distance during the colder months.

When physical distancing and limitations on public gatherings have been relaxed, and a vaccine is widely available, we will begin to reintroduce pre-pandemic library services, such as in-person events.

On behalf of our Board of Trustees, our staff and myself, we thank you for your patience and continued support of the library.



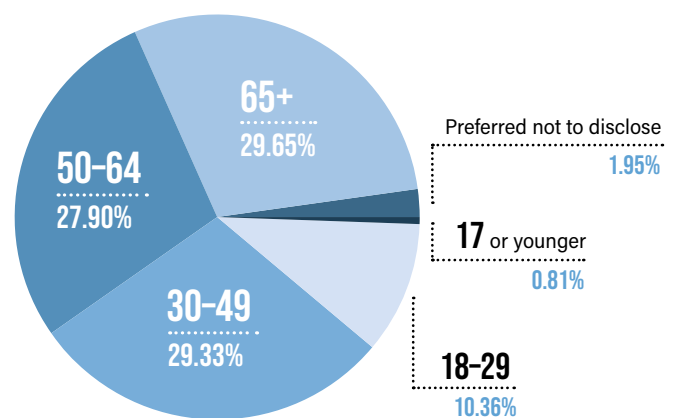
**Rich Wolff**  
Library Administrator



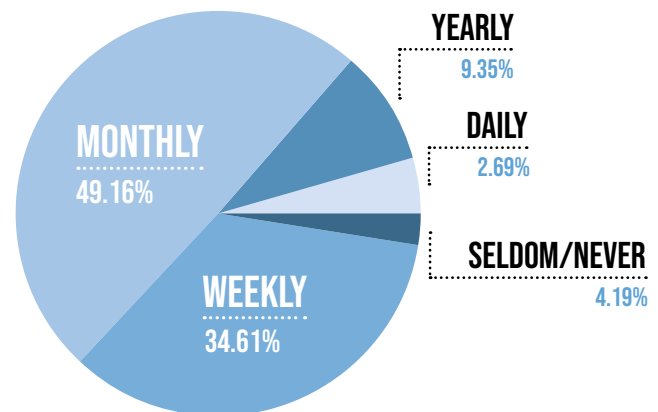
# SURVEYING OUR EVOLVING COMMUNITY NEEDS

**A**s our Village has grown and evolved over the decades, the library has been proactive about assessing the needs of our community, conducting surveys in 1990, 1994, 1998, 2008, and now, in 2020. Feedback from these surveys has played a pivotal role in our strategic planning over the years—including our decision to add Sunday service hours—and we anticipate that the survey data we collected this year, coupled with information from the 2020 Census, will help us understand how best to serve you in the coming decade. Survey data has already informed some of our decision-making on projects such as our website redesign, reducing costs for copying and printing, and making small changes to increase the speed of our app.

Our survey this year included opportunities to participate online and in-person, and we collected almost 3,000 responses between March 3 and April 3, 2020. While we could not have anticipated COVID-19 closing the library during this time, we were forced to close our doors on March 16, just as we had begun to collect feedback from the community. The result is that many of your open-ended responses reflected both your appreciation of our pre-pandemic services, and those, such as eBooks, that proved all the more critical when in-person visits to the library were impossible.



**AGE OF PARTICIPANTS**



**FREQUENCY OF VISITS**

The majority of survey participants use the library on a fairly regular basis—either monthly or weekly—and responses were evenly distributed among adult age groups. Your responses have helped us learn what services we should promote more, where our strengths and opportunities lie, what our community’s priorities are, and what our community values most about the library. We are humbled that you view the library as an essential part of Tinley Park. As we embark on our long-range planning, your feedback will assist us in our efforts to ensure that the library remains at the heart of the community. Thank you to each and every person who took time out of their day to help us understand how to serve our community better. We are here for you.

**Top materials and services survey participants are unaware of:**

- 1. Genealogy materials (Ancestry, Newspapers.com, Tinley Moraine Genealogical Society, etc.)
- 2. Visually-assistive computer for sight impairments
- 3. Photo, video, and audio recording, creation, and editing in the digital media studio
- 4. Teaching resources (Book Boxes, Scholastic Teachables, etc.)
- 5. Databases and online research resources (Mango Languages, Morningstar Investment, ConsumerReports, Reference USA, Gale LegalForms, etc.)

**According to survey participants, the Tinley Park Public Library is a place to:**

- 1. Conduct research.
- 2. Discover, learn, and explore new ideas.
- 3. Attend classes and events.
- 4. Quietly read, work, or study.
- 5. Check out books, movies, music, and other items.

**OUR STRENGTHS & OPPORTUNITIES**

**Where we are exceeding expectations**

71%	LIBRARY CONDITION AND ATTRACTIVENESS
60%	FRIENDLY AND WELCOMING ATMOSPHERE
45%	COLLECTION OF MATERIALS

**Where we have room to grow**

5%	DIGITAL COLLECTION
5%	EVENTS FOR ADULTS
4%	LIBRARY WEBSITE



## COMMUNITY PRIORITIES

What's very important to our community

78%	CHECKING OUT ITEMS
68%	REQUESTING ITEMS AND PLACING HOLDS
67%	GETTING HELP FROM STAFF

What's not important to our community

23%	STREAMING MEDIA
21%	USING THE DIGITAL MEDIA STUDIO
20%	BOOKING THE MEETING ROOM

## TOP 5 THINGS TINLEY PARK VALUES ABOUT THE LIBRARY

- 5 Programs**  
"I truly value the programming and classes and activities at TPPL."
- 4 Location**  
"Conveniently located and good hours"
- 3 Staff**  
"The people that work here are awesome and helpful."
- 2 Library Space/Atmosphere**  
"Spacious layout which provides accessible places for reading/studying"
- 1 Materials**  
"That materials are always readily available for me. The library keeps up to date on materials."

How essential is the Tinley Park Public Library to the community?

**99.76%**  
responded that the library is essential

# FREE ONLINE RESOURCES

the gift you didn't know you were wishing for

**A**ccording to our survey, roughly 43% of respondents were unaware their library card offers them access to over 50+ online resources. Our online resources are one of our finest hidden gems—rather than paying \$60 or more for Consumer Reports, for example, you can log in anytime with your library card. During the pandemic, Ancestry also began to allow our community to use its services from home (formerly, you had to visit the library in-person to use Ancestry). Some of the open-ended comments

in our survey indicated how much community members appreciate having access to Ancestry and other online resources: “I love having Ancestry.com at the library,” wrote one patron, and another indicated how much they valued “online computer training via Lynda.com.” When asked about the library’s online resources, our staff light up with enthusiasm. “I check with Consumer Reports for every car and appliance purchase I make,” said Youth Services Manager, Kerry Reed. “I trust them far more than

any other review source.” “When my son had to do a project on the flags of different countries, CultureGrams was really useful,” said Adult Services Manager Kristina Howard. Don’t just take it from our staff—our patrons are equally enthusiastic about our resources, using them for homework assignments in a pinch. “For my daughter’s school report, we looked up facts about Mother Teresa in Biography Reference Center. The information was detailed and just right for her reading level,” said patron Y.C.

## Holiday Shopping Buying Guides



Whether you're searching for a smart TV, smartwatch, robotic vacuum, or coffee maker, you can find the perfect gift using Consumer Reports' unbiased reviews for free with your library card.

**GET STARTED AT:**

[tplibrary.me/consumer-reports](https://tplibrary.me/consumer-reports)



Searching for a book for your father who loves thriller novels? A book to help your 4-year-old granddaughter prepare for a new baby brother? Novelist gives you recommendations by age and genre.

**GET STARTED AT:**

[tplibrary.me/novelist](https://tplibrary.me/novelist)



**FOR CLASSES TO POWER  
YOUR PROFESSIONAL LIFE,  
SEE PAGE 18.**

## Opportunity, Information, & Growth



Get expert help with your resume from 2-11 pm, find interview tips, discover careers that meet your skills and interests, and get assistance with your job search.

**GET STARTED AT:**

**[tplibrary.me/job-now](https://tplibrary.me/job-now)**



ReferenceUSA is now Reference Solutions! Find the contact information of U.S. companies, discover consumer lifestyles, find job postings, and search the U.S. white pages.

**GET STARTED AT:**

**[tplibrary.me/reference-solutions](https://tplibrary.me/reference-solutions)**



**GET COZY**   
**WITH BOOKS**

## HELP YOUR FAMILY WARM UP TO READING

We have a number of ways to get your family reading this winter, including seasonal and year-round services and initiatives. It's never too soon to instill a love for reading.

### Books for Babies YEAR-ROUND

Sponsored by the Friends of the Library, babies up to six months old are eligible to receive a Books for Babies kit. These kits include a colorful board book along with reading tips and early literacy information. Pick up a Books for Babies form at the Youth Services Desk or fill one out using the link below.

#### DOWNLOAD FORM:

[tplibrary.me/books-babies](https://tplibrary.me/books-babies)



## 1,000 Books Before Kindergarten

YEAR-ROUND

We have joined hundreds of other libraries in this initiative to promote early literacy in young children. Parents and caregivers are encouraged to read to their children starting from birth. This exposure to reading and early literacy helps babies, toddlers, and preschoolers develop the skills they will need to be successful in school and a lifelong love for books.

#### LEARN MORE:

[tplibrary.me/1000-books](https://tplibrary.me/1000-books)

## Read Aloud Adventure: Fairy Tales

Pledge to read aloud with your family in this month-long adventure! Signup is required—space is limited to 20, but only one registration per family is needed. A Story Bag will be waiting for your family at the Youth Services Desk each Monday during our open hours in the month of January. Families will also receive an invitation to attend our Zoom celebration finale on February 1. Join us for Fairy Tale trivia, a Magical Indoor Scavenger Hunt, and Show and Tell. Costumes are welcome. You will receive the Zoom meeting link and password via email closer to the date of the event. No software is needed to access this presentation online.

#### MORE DETAILS AND SIGN UP:

[signup.tplibrary.org/events](https://signup.tplibrary.org/events)

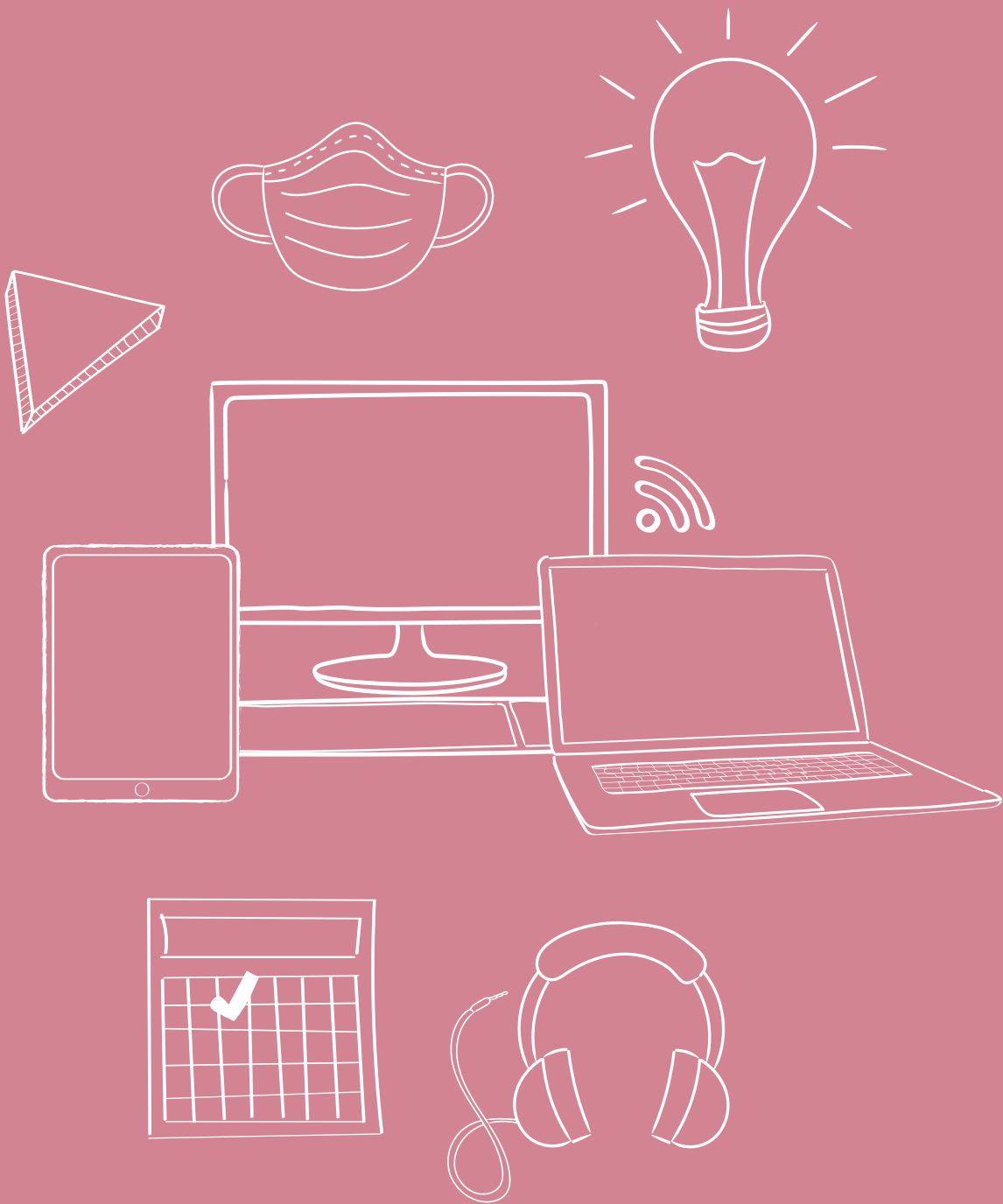


## Teen Reads Subscription Boxes

They're back! Teens in grades 6-12 can sign up between December 1 and 20 and pick up your personalized boxes during the months of January, February, and March. Inside you will find a library book (or two!) and little gifts based on your preferences. When you finish the book, return it to the library, but keep the rest—including the box—they are for you! Signup is required. Limit 20.

#### MORE DETAILS AND SIGN UP:

[tplibrary.me/teen-reads-box](https://tplibrary.me/teen-reads-box)





# VIRTUAL EVENTS

We are bringing our events to you through Zoom webinars and meetings. Signing up is easy: Once registered, you'll receive an email with the event link and password.

## A few helpful things to know:

- Downloading the Zoom software/app is not required to attend our events, but may enhance your experience.
- Recordings of some events will be made available on-demand for a limited time at [tplibrary.org/events](https://tplibrary.org/events).
- Some events contain a live, interactive presentation, and you may be visible to other participants.
- For help with Zoom, visit [tplibrary.me/zoom-help](https://tplibrary.me/zoom-help), or use our "Ask a Librarian" chat for live help.



### Event Signup

Visit [tplibrary.me/events](https://tplibrary.me/events) or call us at 708.532.0160 to sign up for events.



### On-Demand Events

Visit [tplibrary.org/events](https://tplibrary.org/events). You can either click on the **On Demand** button or the click on the title of the event and find the recording link in the event description.



### YouTube Events

Visit [youtube.com/user/TPPLibrary](https://youtube.com/user/TPPLibrary) on or after the listed date of availability.

EVENT LISTINGS



# CHILDREN

## STORYTIMES

### Bouncing Babies

Ages 3–23 months with adult(s)

Thu, Dec 10, Jan 7 & 21, Feb 4 & 18

10–10:30 am

### Wiggle Worms

Ages 2–3 years with adult(s)

Thu, Dec 3 & 17, Jan 14 & 28,

Feb 11 & 25

10–10:25 am

### Preschool Stories

Ages 3–5 years with adult(s)

Wed, Dec 2–Feb 24

10–10:30 am

### Yoga Storytime

Ages 3–5 years with adult(s)

Tue, Jan 19

10–10:30 am

### Family Pajamarama

Ages 3–8 years with adult(s)

Fri, Dec 18, Jan 15, Feb 19

7–7:30 pm

### Share-a-Language Storytime

Ages 3–8 years with adult(s)

Sat • 10–10:30 am

**Arabic:** Dec 26, Jan 30, Feb 27

قصص و اغاني باللغة العربية مع المعلمة  
منى جرار

## PRE-K & GRADE K

### Preschool Lab

Ages 3–5 years with adult(s)

Fri, Dec 4, Jan 8, Feb 5

10–10:30 am

### Family Game Night

Families with children

Fri, Jan 29

7–8 pm

### Crazy About Dinosaurs

Ages 3–5 years with adult(s)

Mon, Feb 8

10–10:30 am

## GRADES K–1

### Let It Snow

Grades K–1

Tue, Dec 15

4:30–5 pm

### STEAM Ahead

Grades K–1

Wed, Dec 30, Jan 27, Feb 24

4:30–5:15 pm

### Yoga

Grades K–1

Tue, Jan 12

4:30–5:15 pm

### Storybook Friends

Grades K–1

Thu, Jan 21

4:30–5:15 pm

### Have a Laugh

Grades K–1

Mon, Feb 15

4:30–5:15 pm

## GRADES 2–3

### Draw Me a Picture

Grades 2–3

Wed, Dec 16, Jan 20, Feb 17

4:30–5:15 pm

### No-Cook Club

Grades 2–3

Mon • 6:30–7:15 pm

Dec 28: Gingerbread Drops

Jan 25: Banana Bites

Feb 22 Pinwheels

### Poem Pals

Grades 2–3

Tue, Jan 5

4:30–5:15 pm

### STEM in Nursery Rhymes

Grades 2–3

Wed, Feb 3

4:30–5:15 pm

## GRADES 3–5

### Bluestem Book Club

Grades 3–5

Thu • 4:30–5:30 pm

Dec 3:.....**Wedgie & Gizmo**  
by Suzanne Selfors

Jan 7:.....**Click**  
by Kayla Miller

Feb 4:.....**Bob**  
by Wendy Mass



## GRADES 4–5

### Winter Relaxation Party

Grades 4–5  
Thu, Dec 17  
4:30–5:30 pm

### Book-to-Movie Discussion: *The One & Only Ivan*

Grades 4–5  
Tue, Jan 19  
4:30–5:30 pm

### Creative Writing Club: Choose Your Own Adventure

Grades 4–5  
Thu, Feb 11–25  
4:30–5:30 pm

## GRADES 4–8

### Winter Wreath

Grades 4–8  
Mon, Jan 18  
7–8 pm



## TEENS

## GRADES 6–12

### Teen Paint Night

Grades 6–12  
Fri • 7–8 pm  
Dec 4: Landscapes  
Feb 5: Still Life

### Create Your Own Improv Video

Grades 6–12  
Thu, Dec 10  
7–8 pm

### Teen Craft Night

Grades 6–12  
**Paper Snowflakes**  
Fri, Dec 11 • 7–8 pm  
**Duct Tape**  
Thu, Jan 14 • 7–8 pm

### Teen Game Night

Grades 6–12  
**Mad Libs**  
Tue, Dec 22 • 7–8 pm  
**Among Us**  
Tue, Feb 2 • 7–8 pm  
**Scattergories**  
Thu, Feb 11 • 7–8 pm

### *Avatar: The Last Airbender* Discussion Group

Grades 6–12  
Tue, Dec 29, Jan 26, Feb 23  
7–8 pm

### Teen Coloring & Cocoa

Grades 6–12  
Tue, Jan 5  
7–8 pm

### Teen Drawing: Manga

Grades 6–12  
Fri, Jan 8  
7–8 pm

### Teen Baking

Grades 6–12  
Tue, Jan 19, Feb 16  
7–8 pm

## YOUTH ADVISORY COUNCIL

### YAC Yule Ball

Grades 6–12  
Tue, Dec 8  
6–7 pm

### YAC: Youth Advisory Council

Grades 6–12  
Tue, Jan 12, Feb 9  
6–7 pm

# ADULTS

## SEASONAL EVENTS

### 'Twas the Night Before Christmas, American Traditions

Fri, Dec 4  
7-8 pm

### Ageless Grace (Brain & Body Fitness)

Mon, Dec 7 & 21, Jan 4 & 18,  
Feb 1 & 15  
10-10:45 am

### Ode to Beethoven

Tue, Dec 8  
7-8 pm

### Walking Meditation

Mon, Dec 14  
7-8 pm

### In the Belly of the Beast: MLK in Chicago

Thu, Jan 14  
7-8:15 pm

### Decluttering Our Hearts & Homes

Mon, Jan 25  
7-8 pm

### Roving the Red Planet

Thu, Feb 11  
7-8 pm

### A Bit of History: Dramatic Portrayal of Harriet Tubman

Wed, Feb 17  
7-8 pm

### Vagabond Traveler: Searching for South America

Mon, Feb 22  
7-8 pm

## CLASSES & WORKSHOPS

### Cut the Cable Cord

Mon, Dec 7 & Feb 22  
11 am-12 pm

### Researching with Reference Solutions

Thu, Dec 10  
8-8:30 pm  
Thu, Jan 21  
6:30-7 pm

### Online Job Searching

Tue, Dec 15  
3-4:30 pm  
Thu, Feb 11  
2-3:30 pm

### Job Now from Brainfuse

Wed, Dec 16  
3-3:30 pm  
Tue, Jan 26  
8-8:30 pm

### LinkedIn: Create a Professional Profile

Tue, Jan 12  
3-4 pm

### Online Privacy & Security

Thu, Jan 14  
2-4 pm

### Résumé Tips & Tricks

Tue, Jan 19  
2-4 pm

### Pro Tips for Businesses on Instagram

Wed, Jan 20  
7-8 pm

### The Story of Computers

Fri, Jan 22  
3-4 pm

### Password Management

Wed, Jan 27  
2-3 pm

### Introduction to Cryptocurrencies & Blockchain

Tue, Feb 9  
3-4 pm

### Skill Building with Lynda.com

Tue, Feb 16  
1:30-2:30 pm

### Online Privacy Tools

Fri, Feb 19  
3-4 pm

### GALE Business Plan Builder

Wed, Feb 24  
3-4:30 pm

# CELEBRATING BLACK VOICES

In celebration of the accomplishments, culture, and rich history of the African-American community, we are highlighting these featured events in association with Martin Luther King Jr. Day and Black History Month.



## In the Belly of the Beast: MLK in Chicago

Thu. Jan 14  
7-8:15 pm



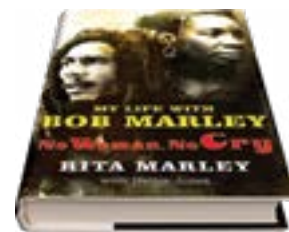
## Movie Discussion: *Beasts of the Southern Wild*

2012 | PG-13 | 93 min  
*Adventure, Drama, Fantasy*  
Wed, Feb 10  
7-8 pm




## A Bit of History: Dramatic Portrayal of Harriet Tubman

Wed, Feb 17  
7-8 pm



## Book Discussion: *No Woman, No Cry*

by Rita Marley  
*Autobiography*  
Thu, Feb 18  
7:30-8:30 pm

 Libby/OverDrive

# WATCH ON YOUTUBE

## OUR CHANNEL:

**youtube.com/user/  
TPPLibrary**

## ADULT CRAFTS

### Take & Make Craft Kits

Reserve your craft kit, watch the tutorial, and start crafting! 50 kits are available for Tinley Park Library cardholders. Limit one per person. Pick up at the Checkout Desk begins one week prior to video premiere. Sign up to reserve your kit at **[tplibrary.me/events](https://tplibrary.me/events)**. *Note: Kits are designed for adults.*

## COOKING HOW-TO'S

Watch these pre-recorded videos on our YouTube channel. Signup is not required to view these videos. *Supplies not provided by the library.*





### **Paper Quilled Snowflakes**

Video available Dec 16–30

Try this centuries-old method of coiling and shaping decorative paper designs.



### **DIY Bird Seed Cakes**

Video available Jan 5–19

Feed our fine, feathered friends this winter with handcrafted bird feeders.



### **Origami Gift Box**

Video available Feb 2–16

Use the art of folding paper to package something special for your Valentine.



### **Winter Soups with Chef Dave Esau**

Available beginning Jan 28

Chef Dave shares his easy cooking tips, fun attitude, and awesome recipes!



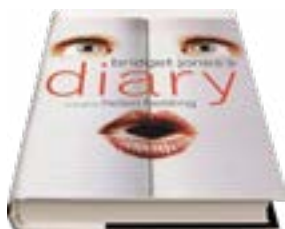
### **Chocolate Truffles**

Available beginning Feb 2

Learn to make mouth-watering chocolate candies to give to your special someone this Valentine's Day!

# VIRTUAL DISCUSSIONS

## BOOKS



### ***Bridget Jones's Diary***

by Helen Fielding

*Humorous Fiction*

Thu, Dec 17

7:30–8:30 pm



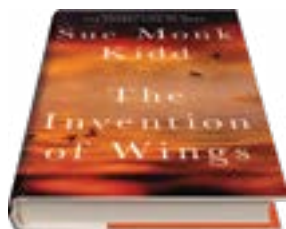
Libby/OverDrive



Hoopla

“[the book is] the sort of cultural artifact that is recognizably larger than itself. . . . [It] sits so lightly on the reader that it is easy to overlook the skill with which it has been assembled.”

—*The New Yorker*



### ***The Invention of Wings***

by Sue Monk Kidd

*Historical Fiction*

Wed, Jan 13

1:30–2:30 pm



Libby/OverDrive



Hoopla

“Inspired by the true story of early-nineteenth-century abolitionist and suffragist Sarah Grimké, Kidd paints a moving portrait of two women inextricably linked by the horrors of slavery.”

—*Booklist*



### ***In the Enemy's House***

by Howard Blum

*Nonfiction, Biography*

Wed, Feb 10

1:30–2:30 pm



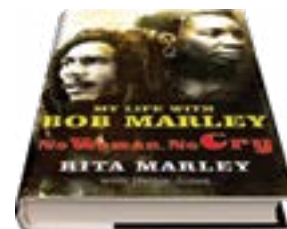
Libby/OverDrive



Hoopla

“Blum succeeds in making comprehensible the difficult story of how code-breakers unraveled a system of encrypted Soviet messages that eventually became known as the Venona files.”

—*The New York Times*



### ***No Woman, No Cry***

by Rita Marley

*Autobiography*

Thu, Feb 18

7:30–8:30 pm



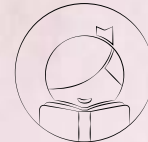
Libby/OverDrive

“Fans of reggae legend Bob Marley will welcome this no-nonsense biography from his wife, Rita, who was also his band member, business partner, musical collaborator and the only person to have witnessed firsthand his development from local Jamaican singer to international superstar.”

—*Publishers Weekly*

Book and movie selections are available at the Reference Desk one month before the discussion date.

eBooks are available through the Libby/OverDrive or Hoopla apps.



Libby



Hoopla

## MOVIES



### ***North by Northwest***

1959 | NR | 136 min  
*Adventure, Mystery, Thriller*  
Wed, Dec 9  
7–8 pm

“Gripping, suspenseful, and visually iconic, this late-period Hitchcock classic laid the groundwork for countless action thrillers to follow.”

—*Rotten Tomatoes*



### ***Eternal Sunshine of the Spotless Mind***

2004 | R | 108 min  
*Drama, Romance, Sci-Fi*  
Wed, Jan 13  
7–8 pm

“The latest and loveliest alternative universe created by Charlie Kaufman, America’s most—we should probably say only—intellectually provocative screenwriter.”

—*TIME Magazine*



### ***Beasts of the Southern Wild***

2012 | PG-13 | 93 min  
*Adventure, Drama, Fantasy*  
Wed, Feb 10  
7–8 pm

“*Beasts of the Southern Wild* is sheer poetry on screen: an explosion of joy in the midst of startling squalor and one of the most visceral, original films to come along in a while.”

—*Associated Press*



ECRWSS  
Residential Customer

## WE LOVE TO HEAR FROM YOU.

We appreciate all who participated in our survey in spring 2020 and we always value the constructive feedback and support we receive.



*I value the TPPL as a place for my family to learn and have fun together. It is a friendly and welcoming place that allows my family these wonderful opportunities for free which is very valuable to us.*



*The Tinley Park Public Library provides a cost savings to my family and me. The streaming service is wonderful (SWAN, RB Digital, Kanopy, Libby, Lynda, and Hoopla). The new normal—(Coronavirus/COVID-19), has changed our point of view. The library's online resources bring TPPL home. Thanks.*



*Growing up in Tinley Park, the Tinley Park Public Library always has been a place for me to learn, study, and meet new people. I value the TPPL always keeping up with the current times. For example, Hoopla makes it extremely accessible to read to my heart's content, and also makes my morning commute more bearable. Thank you!*

### BOARD OF TRUSTEES

Catherine Hannon, President  
Gina Miller, Vice President  
Darren Meyers, Treasurer  
Laura Hess-Wojcik, Secretary  
Patricia Adaranijo, Trustee  
Bradley Daniels, Trustee  
Barbara Rose Whalen, Trustee

### BOARD DATES

Wed, Dec 2  
Wed, Jan 27  
Wed, Feb 24

### ADMINISTRATION

Rich Wolff, Administrator  
Zach Musil, Assistant Administrator

### PATHWAYS STAFF

Kevin Palys  
Sarah Schroeder

### LIBRARY CLOSED

Thu, Dec 24  
Fri, Dec 25  
Thu, Dec 31  
Fri, Jan 1